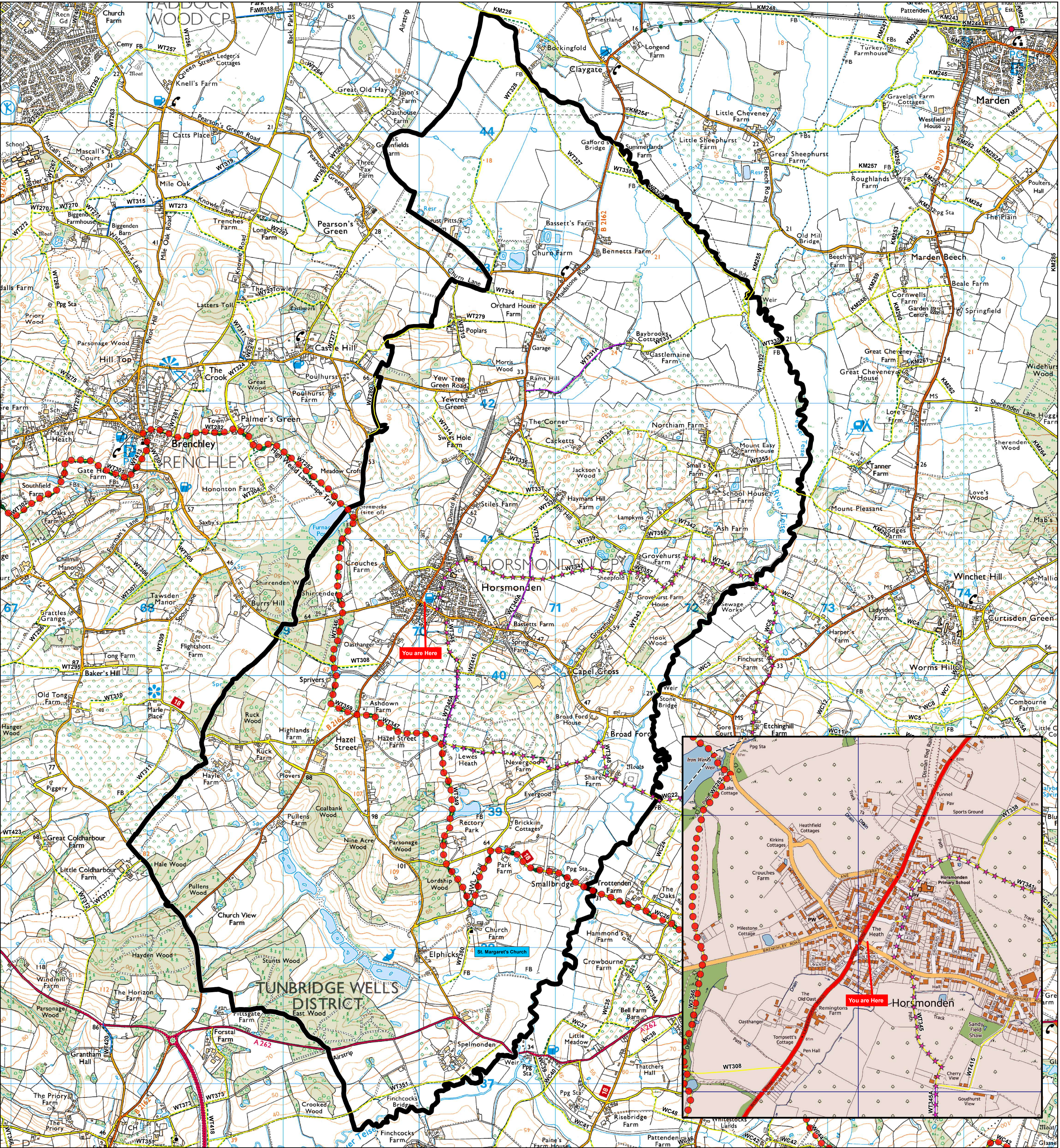


Horsmonden

... and surrounding area



Key to Map

- Footpath
- Bridleway
- Byway Open to All Traffic
- Restricted Byway
- Parish boundary
- Parking
- Public House
- Camp/Caravan Site

To report a problem on a public right of way please visit www.kent.gov.uk/provfaults or phone 03000 41 71 71 (Monday - Friday 9am - 5pm)

Public rights of way on this are liable to change. Please follow the signposting and waymarking on the route you are using. The representation on the map of any other road, track or path is not evidence of the existence of a Right of Way. This is not the definitive legal map. Please follow the Countryside Code: www.naturalengland.org.uk

© Crown Copyright and database right 2019. Ordnance Survey 100019238

Additional Information

- High Weald Landscape Trail
 - Walks in West Kent - Horsmonden
 - Both the High Weald Landscape Trail and Horsmonden Walk runs through Horsmonden.
- For further information on these routes and other promoted routes around Kent, please check out the Explore Kent website <https://explorekent.org/activities/>



About the local area...

Anglo-Saxon tribesmen made the first settlement at Horsmonden - 'a clearing in the forest by the stream where horses were taken to water'.

The medieval parish of Horsmonden sited the parish church on the land of the principal manor, then Speldmonden, some 2 miles south of the current village centre, which only grew up near the heath as a result of the burgeoning Wealden iron industry. Even Charles I visited Horsmonden to inspect the famous furnace forge and foundry.

Henry VIII at one time owned the manor of Horsmonden, and during his reign, hop growing was introduced into England which played a key part in forming the local landscape.

Today, hop growing continues, although on a smaller scale; and industry has largely come and gone again. However, Horsmonden's famous past remains and has played a valuable part in forming the Village as it is today.